



SIDE BRACKET INSTALLATION ROVI X3

Side base brackets must be installed prior to installing LUCI on a Rovi X3 wheelchair. This process is required for any chair being retrofitted in the field and assumes the ability to raise the chair to get the drive wheels off the ground.

YOU WILL NEED

- Flathead Screwdriver
- Phillips Screwdriver
- 13mm Socket (2)
- Ratchet (2)
- 3/8 extension (or other with 1/2" diameter)
- 8mm Allen Socket
- Torque Wrench
- Jack
- Rovi X3 Base Prep Kit (included):
 - Base Brackets (2)
 - M10 x 35 10.9 Socket Cap Screws (8)
 - 5/16 ID Mil-Spec Washers (4)

1 Remove the Drive Wheel and Fender

Lift the elevator of the chair to its highest setting. Use the jack to lift the whole wheelchair far enough to get the drive wheels off the ground. Using a flat head screwdriver, remove the center caps from the wheels. Remove the four 13mm lock nuts from the wheel and remove the drive wheel. Take care not to lose the washers behind the nuts when removing the wheel. **DO NOT REMOVE THE LARGE CENTER LOCK NUT!** Remove the four Philips head screws from the fender mount. Note that the top two screws have nuts on the back. Hold them from behind as shown to prevent them from falling out while removing.

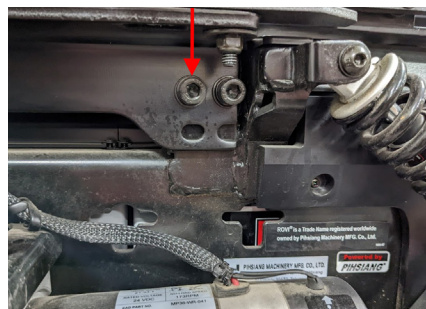


2 Replace the Base Bolts

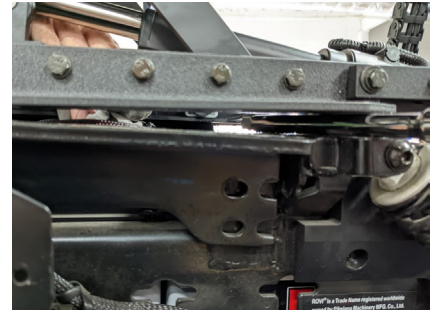
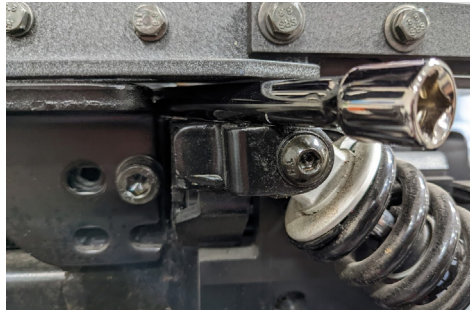
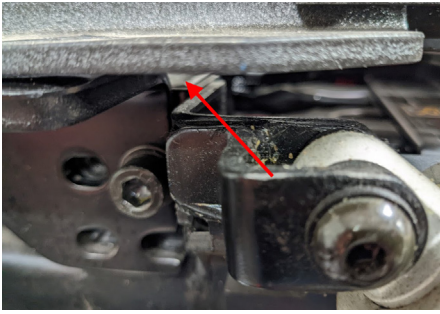
Once the fenders have been removed, replace the two front base bolts one at a time to prevent the seat mount from drooping. Transfer the original washers to the M10 x 35 socket cap screws (provided in the kit) and install them so that there is enough room behind the washers for the new bracket to slot into. Remove the forward bolt from the rear pair of bolts and transfer the washers over to the new M10 x 35 socket cap screw. Do not install the bolt yet.

For 17.25in seat height only: Remove the two seating assembly mounting bolts.

Note: Take care not to move or tilt the chair while the seating bolts are removed.

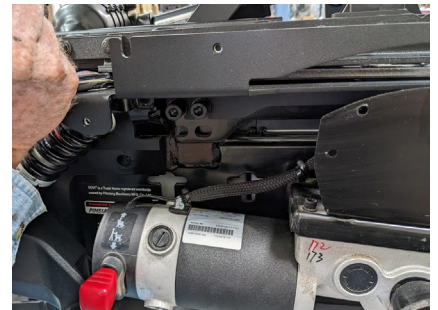
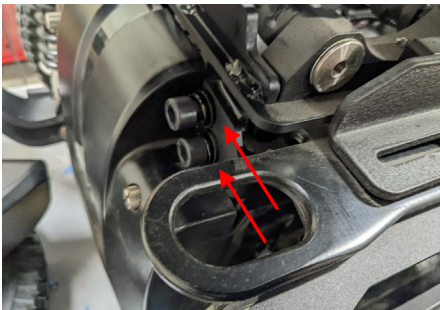


Wedge the 3/8 extension in between the base shock absorber mount and the seat mounting bracket. Insert the extension across the right angles as shown below. This will hold the seating assembly up while the final bolt is removed. NOTE: Higher STF heights will require a larger wedge to support the seat.



3 Install the Bracket

Slide the bracket in between the fender mount and the chair base. You may have to push the motor down slightly to give enough room to snake the bracket through. Slip the front mounting face in between the forward bolt washers and the base. Holding the rear of bracket up against the frame, insert one of the rear bolts into the forward hole. Insert the other rear bolt. You may need to pry up lightly on the extension bar to align the rearmost hole. Torque all bolts to 60 ft-lbs.



For 17.25in seat height only: Reinstall the original seating assembly bolts, replacing the lower washers with the provided MIL-Spec 5/16 ID washers. Torque to 25 ft-lbs.

4 Reinstall the Fender and Wheel

Reinstall the fender, holding the nuts from behind. Reinstall wheel using the 4 washers and lock nuts and torque to 25 ft-lbs. Reinstall center cap. Repeat all steps on the other side of the wheelchair to install the second base bracket.

